

Buzzword

Herefordshire Beekeepers' Association

October 2023



Events - October

14th / 15th – Honey Show

As in previous years, the annual Honey Show will be held as part of [the Big Apple, Harvestime](#) weekend, at Helens, Much Marcle. Schedule appended, (contact Show Secretary [Val Lilwall](#) to register)

30th - Buckfast Talk – Zoom

Events - November

20th - Buckfast Talk – Zoom



Asian Hornet

Sixty nests found this year – so far. Almost as many as all the nests found from 2016 to 2022.

See pages 2, 3 and 4



This fascinating image appears in a manuscript originating in York between 1303 and 1308. Written in a mixture of Old French and Latin, it can now be found in the München, Bayerische Staatsbibliothek. Identifier: BSB Cod.gall. 16

South LAN – Asian Hornet Week

After hive inspections at Holme Lacy back in August, AHAT (Asian Hornet Action Team) Coordinator, Rob Williams - also a professional pest controller - gave a talk on the Asian hornet (*Vespa velutina nigrithorax*, the yellow legged hornet). This is a reportable, highly invasive, pest that poses a serious threat to all pollinators, the ecological system and to humans.

Experience in Europe has shown that the Asian hornet will spread exponentially - an alarming rate.

Despite earlier attempts at preventive measures, 18 established Asian hornet nests have been found and destroyed this summer so far * in Kent, Dorset, Devon, and Cornwall. Sightings of individuals occurred in Northumberland, Suffolk, Hampshire - not forgetting the first in Tetbury, Gloucestershire.



The UK is now in Phase 2, (the eradication phase) of the invasion. There are four phases involved with an invasion of alien species: Prevention, Eradication, Containment and Long-term management.

Urgent action is required to slow down the spread and to minimise its impact.

What beekeepers can do. Complete the BBKA online assessment (you can't fail) [Asian Hornet Team Exercise & Map](#) and join your local AHAT team.

At this time of year when wasps will die off naturally but become a nuisance to beekeepers, it is beneficial to set up bait - using a simple wick station model, or a wasp trap, with attractant. A hornet will feed from this, allowing you to take a photograph and observe which direction it flies off and returns.

*As if to demonstrate this alarming growth rate, since this article was written the total number of nests found this year has now reached 60, in 47 locations (as at 29th September). See: [2023 Asian Hornet Rolling updates](#)

It is illegal to trap and release an alien species – but if you do trap one, please contain it (in the freezer) and alert the authorities via the free [Asian Hornet Watch App](#).

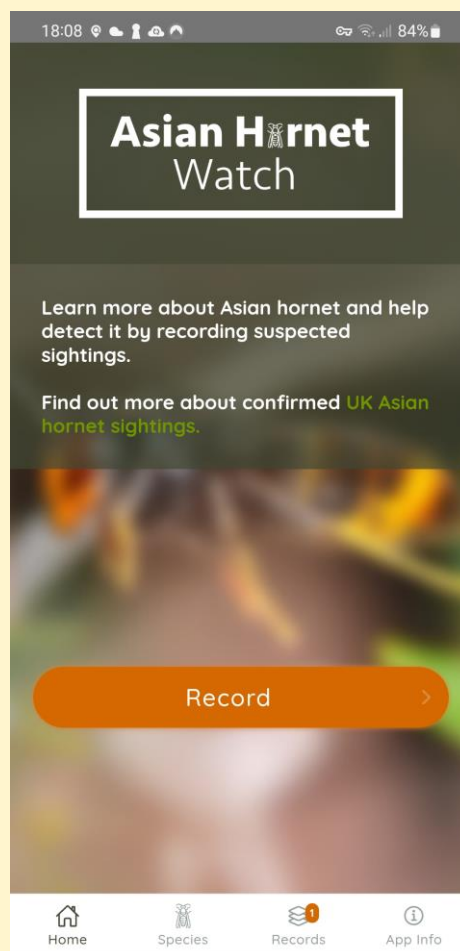


or by email to alertnonnative@ceh.ac.uk

At present the NBU and DEFRA organise – and pay for - nest destruction.

If you have hives in an out apiary, please check the regulations of the Wildlife and Countryside Act 1981 regarding trespass on other people's land, permission to place traps or call a pest controller.

In future there will be a requirement for the licensing of agencies, companies, pest controllers and/or individuals to eradicate the Asian hornets and their nests cost-effectively, rapidly and using methods that are not detrimental to the local environment (plants, other insects, wildlife etc) - at an agreed scale of charges to be negotiated. Standard Operating Procedures (SOPs) and quality control mechanisms will also be established.



It is important that you spread the word about the correct identification and reporting of Asian hornets. This insect does not just affect beekeepers, it will affect everyone. Including those on the list below: -

- Sport Clubs/Rambling Clubs/Gardening Clubs/ Cycling Clubs/Youth groups/ Golf Clubs
- Bird Twitchers/ Racing pigeon clubs/ Arborists / Foresters/Tree Surgeons
- Shipping companies/ Ferry operators/ Container depots/ Airports/ Transport and Logistic Companies
- Scouts/Sea/ Army and Air Cadet units.
- Wildlife Trusts/ Zoos/ Wildlife Parks/ Safari parks/ The Crown Estate(s)
- Farmers (NFU) and Market Gardeners
- Fish farms/ Fishermen/angling clubs
- County Councils/ Borough Councils / Parish Councils – hornets love buildings
- National Trust properties/RHS Gardens
- Allotment holders/Garden centres
- Schools/Nurseries/Creches/Playgrounds

The sting is longer, more venomous, than that of a wasp (owing to volume of toxin) and each insect can sting multiple times. The nest defenders will attack in large numbers.

Janelle Quitman

There is still time to spot and report Asian hornets before the queens go into hibernation. If you are looking to use a trap or a simple wick station, we have bulk bought one of the better attractants: 'Trappit'. You can buy smaller quantities of this at cost price – please contact you LAN coordinator

Food Safety for the Beekeeper

This talk, given by Andy Pedley at Sutton St Nicholas Village Hall on 27th September, was attended by more than 40 people. The presentation was informative and led to a lively set of questions and answers.

Andy's handout can be found at
<https://tinyurl.com/safehoney>



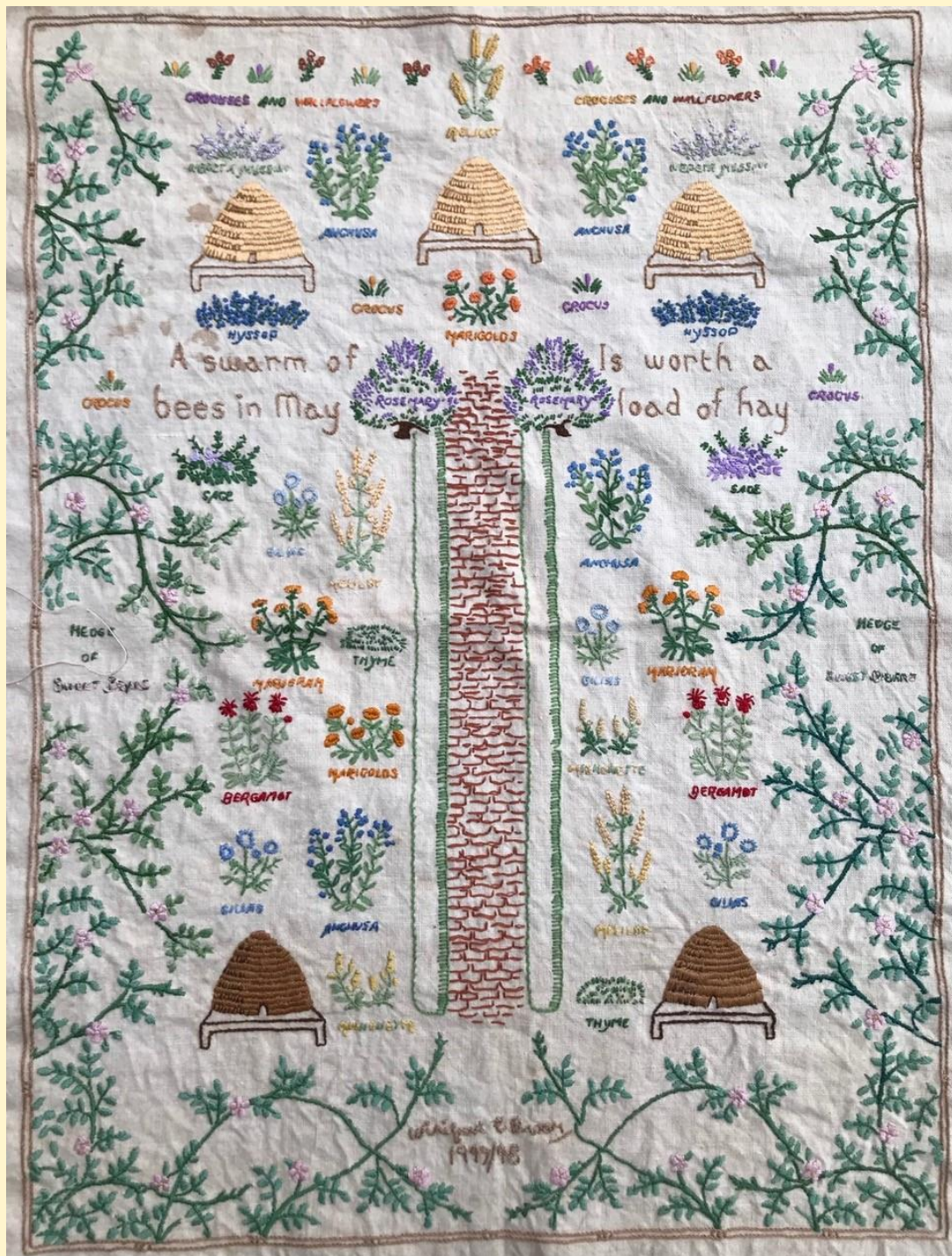
He mentioned the Food Standards Agency booklet: "Food Handlers: Fitness to work, regulatory guidance and best practice advice for food business operators."

<https://tinyurl.com/fsafoodhandler>

And his own book: "Food Safety for Beekeepers; Advice on legal requirements and practical actions" can be obtained at:
<https://tinyurl.com/nbbhoney>



A Bee Sampler



This delightful sampler would appear to have been made by one 'Winifred T Brown' in 1947/8. It was discovered at a car boot sale by artist Fiona Cumberpatch, whose own work can be seen at <https://fionacumberpatch.com/>

Bob's Beelines



The weather will be getting colder so now is the time to put your mouse guards on as the mice will be looking for a nice, dry home for the winter.

Get your winter feeding done by the second week of October and make sure they have enough stores to get them through the winter. You can feed candy if needed.

You can remove your Varroa treatment if your four weeks from putting it on are up.

Make sure the roof is waterproof and will not blow off in strong winds. Not much else you can do for now only clean up your equipment ready for next year.

We have syrup and candy in stock.

That's all for now

Bob and Kath Cross - **01886 880 554**

PS See you at the Honey Show

Topical tip – October

Changes to our seasons have made the traditional tasks of the beekeeper difficult: who know what the winter will bring? I am still trying to feed my bees, but judging by the amount of ivy pollen going into the colonies they are probably using the syrup to raise winter bees rather than storing it around the brood nest. If the weather is cold enough they should go into a winter cluster surrounded by plenty of ripe stores, but if we have a mild winter they may well consume large quantities before the spring forage is available. I have decided to place some fondant above each colony where it is easy for the bees to access. I will nadir some supers that have honey in them for the bees to clean out over winter. It is better to leave their honey below the brood so that they can access fondant readily if needed, and there is not a large cold area above the cluster. I like to arrange frames in nadired supers so that the bee space is correct for brood rearing in the spring.

One of the challenges of beekeeping is that every year is different, last year the autumn was so mild that excess ivy honey was accumulated leaving little room for the queen to lay and produce the vital winter bees. This year the rain and blustery weather makes this less likely.

Mary Walter

Committee Members

Chairman : Tony Ravenhall

Vice Chairman : Deborah Smith

Secretary : Janelle Quitman

Treasurer : Roger Gill

Membership Sec. : Steve Utley

Committee:, Rob Williams, Janelle Quitman, John Moxley and Val Lilwall,

LAN CO-ORDINATORS

North LAN: Mary Walter

East LAN: Simon Durrant

South LAN: Val Lilwall

PATRON: Councillor Ellie Chowns

To contact a member of the committee please look on our website for the appropriate email address: <https://www.herefordshirebeekeepers.org.uk/>

The Herefordshire Beekeepers Association is a Charitable Incorporated Organisation, Registered Number: 1174917. Members of the committee are also trustees.

Further details at: <https://beta.charitycommission.gov.uk/charity-details/?regid=1174917&subid=0>

If you have contributions to propose for this newsletter, please contact **Kirsten Ellerby** at: news@herefordshirebeekeepers.org.uk



If foul brood is suspected, contact our Regional Bee Inspector (RBI),

- Andy Wattam (RBI) Tel: 07884 791009
andy.wattam@apha.gov.uk

Or, during the season, a Seasonal Bee Inspector (SBI)

- Liz Gardner Tel: 07867 351610
elizabeth.gardner@apha.gov.uk

or

- Bronwen Hopkins - Tel: 07796 433 626
bronwen.hopkins@apha.gov.uk

HBKA ANNUAL HONEY SHOW SCHEDULE 2023

October 14th 2023

Hellens Manor, Much Marcle, Ledbury HR8 2LY

JUDGE: Rebecca Day

JUDGE'S STEWARDS:

SHOW SECRETARY: Val Lilwall

Class Descriptions

Exhibitors are strongly advised to study carefully the Schedule, General Notes and Show Rules set out below. Failure to observe these may result in an entry's non-acceptance or disqualification.

1.	One container of cut comb with liquid honey in the cells (7-9oz in weight)
2.	Two 1 lb jars of Light Liquid Honey
3.	Two 1 lb jars of Medium Liquid Honey
4.	Two 1 lb jars of Dark Liquid Honey
5.	Two 1 lb jars of Naturally Granulated Honey
6.	Two 1 lb jars of Creamed/Soft Set Honey
7.	Two 1 lb jars of Chunk Honey
8.	Novices only – Two 1 lb jars of Honey (Liquid, Granulated or Soft Set) (See Rule 6)
9.	Blind Tasting: (See Rule 7) a) one jar of Liquid Honey. b) one jar of Naturally Granulated, Creamed or Soft Set Honey
10.	One Super Frame ready for extraction displayed in a show case.
11.	One Super Frame, marked 2023, supplied by HBKA
12.	One plain cake of Beeswax weighing 7-9oz (200-255g) with a minimum thickness of ¾" (18mm)
13.	Five Beeswax Blocks each weighing approx. 1oz (27g)
14.	One bottle of Dry Mead.
15.	One bottle of Sweet Mead.
16.	One bottle of honey beverage to be displayed in any size clear glass bottle with removable cork, screw top or cap. (See Rule 8)
17.	Three single items of products of the hive. (see Rule 9)
18.	LAN Challenge A collective display of Products of the Hive with the theme of Beekeeping and Medicine, no more than three items being produced by any one LAN member; with a maximum width of 30"; to be judged on both quality and presentation. LAN Tutors may advise but not participate in this class.
	Open Classes
19.	An item made primarily from beeswax. (See Rule 10)
20.	Three Beeswax Candles up to and including 1 ½" (38mm) diameter. To be displayed in non-combustible stands (one candle will be lit by the judge)
21.	Honey Cake – see attached recipe
22.	Honey Fudge - six pieces to be displayed – see attached recipe.
23.	One jar of honey preserve or fruit curd, displayed in a jar with a twist grip lid. The recipe should be provided with the exhibit.
24.	Honeybee pasture. (See Rule 11)
25.	Any interesting exhibit connected with beekeeping designed and made by the exhibitor, accompanied where necessary by a clear written explanation. (See Rule 12)
26.	Children's Exhibit. Anything connected to beekeeping (open to any child 15 years or under, age to be displayed).
27.	Photographic Competition on the subject of bees and beekeeping. (See Rule 13) a) A colour print, maximum print size 10" x 8", mounted on card with a mount size not exceeding A4. b) A group of photos (minimum of three) of any size on a common theme, but must be presented within an overall mount size not exceeding A3. (Captions optional. No framed prints permitted in any category).

GENERAL NOTES.

- A. Entries may be staged at the following times:
 - Friday October 13th from 4 pm – 6 pm;
 - Saturday October 14th from 8.30 am - 9.45 am.
 - B. Judging will commence at 10.00 am on October 14th.
 - C. Exhibits may be removed from the displays between 5 and 6pm on the 14th or may be collected on Sunday 15th.
-

SHOW RULES.

1. The show is staged under National Honey Show rules.
2. Unless otherwise stated, exhibitors may enter up to three items in any class, but can only gain one award in each, subject to the Judge's discretion to grant a special commendation.
Multiple entries must be clearly marked A, B, C, after the exhibitor's number except when the entry requires two jars when the number and letter on each should be identical.
3. No single exhibit may be entered in more than one class.
4. **Classes 1-17** are open to any member, Full or Associate, of the Herefordshire Beekeepers' Association (HBKA), together with Associate members who are full members of neighbouring associations. Show points will be awarded to prize-winning members of HBKA as per the schedule of points (*See Rule 11 below*).
5. **Open classes** are open to anyone, adults and children, whether or not members of HBKA.
6. **Novice Class** is open to any member who has not previously won a first prize, cup or trophy for honey in any previous Honey Show. The winner will receive free entry to the National Honey Show.
7. **Blind Tasting.** Entries are limited to one jar per member in each sub class. Exhibits will be assessed on taste only and the sub classes judged separately. Blind wrappers will be provided on registration.
8. **Class 16.** A plain label describing the contents should be provided (e.g. Pyment, Melomel, etc.).
9. **Class 17.** Items may consist of any product of the hive, or item made using products of the hive for example propolis, pollen, polish, etc, to be judged on the quality of the exhibits rather than the display.
10. **Class 19.** Exhibits may include candles of any size or style, wax sculpture, encaustic art, etc., but must be created primarily from beeswax.
- 11 **Class 24.** Honey bee pasture. An arrangement of flora, which may include flowers, foliage and/or fruit, from which the honeybee gathers nectar and pollen. A list of species should be provided and will be judged as an integral part of the exhibit.
12. **Class 25.** Exhibits can include works of art, models, practical items etc., provided a clear link exists to bees or beekeeping.
13. **Class 27.** Photographs should be the original work of the exhibitor.
14. **Labelling.** Show labels will be provided by the Show Secretary on registration.
 - Jars & bottles: position the bottom edge of your label 20mm from the bottom of the jar.
 - Show cases: place one label in the top right hand corner of the glass plus a second label on the top of the frame.
 - Wax products: labels should be fixed on the display base, not to the wax.

15. **Show points.** Members will be awarded points as follows:

- 5 – First place.
- 4 – Second place
- 3 – Third place
- 2 – Very Highly Commended
- 1 – Highly Commended
- 0 – Commended

In the case of a tie, the participant with the largest number of high points will be awarded the trophy.

16. **Trophies.** Trophies will only be awarded to HBKA members.

Guidance on Presentation of exhibits.

It will aid the job of show secretary if a list of entries can be produced and sent by email in advance.

- a) Extracted honey should be exhibited in matching standard 1lb squat honey jars with gold metal or white plastic lids.
- b) Pieces of chunk honey should ideally stand upright and extend fully from the bottom to the top of the jar.
- c) National Honey Show Approved Grading Glasses will be used to determine colour of liquid honey.
- d) Super frames should be displayed in show cases; these may be available for loan if requested in advance. Marked frames (Class 11) may be displayed in the rack provided.
- e) Mead should be exhibited in clear, round, unmarked bottles of approx. 27fl. oz. or 75 ml capacity with flanged removable corks (black or white plastic is acceptable).

RECIPES

HONEY CAKE (*To be baked in a 7" round tin*)

Ingredients:

5oz butter	4oz soft brown sugar
6oz clear honey	2 eggs
1 tablespoon of water	7oz self raising flour

Method:

- Preheat the oven to 180°C, 350°F or Gas Mark 4.
- Grease and line the cake tin.
- Place butter, sugar, honey and water in a saucepan and heat until the butter has melted, stirring all the time.
- When the butter has melted, remove the pan from heat and allow the contents to cool to blood temperature.
- Gradually beat in the eggs, add sieved flour and mix until smooth (do not over mix).
- Pour mixture into the greased and lined tin and bake for 1 hour, or until risen and firm to the touch.
- Cooking time and temperature may vary according to the oven used.
- Cover the top during baking if necessary, to prevent browning.
- Leave to cool in the tin for 5 minutes, then turn out onto a cooling rack.

HONEY FUDGE.

Ingredients:

1 lb sugar	2 oz butter
2 oz honey	¼ pint milk

Method:

- Prepare a greased/oiled tin approximately 7" square.
- Put all ingredients into a heavy-based pan and bring slowly to the boil, stirring all the time.
- Cover and boil for 2 minutes.
- Uncover and boil gently for 15 minutes approx. until "soft ball" stage is reached (a little dropped into cold water will form a soft ball – 115°C/230°F).
- Stand pan on cold surface for 5 minutes
- Beat mixture until it starts to thicken and then pour quickly into tin.
- Mark into squares of approx. 1" as it cools – cut when cold.

HEREFORDSHIRE BEEKEEPERS' ASSOCIATION

HONEY SHOW AWARDS

JOINT BBKA/NATIONAL HONEY SHOW BLUE RIBAND

For an exhibit of outstanding merit. Awarded only if there are more than 100 entries in the Show. It includes a voucher for free admission and a free entry to an Open Class at the next National Honey Show.

If there are 50 – 100 entries, an HBKA Certificate of Merit will be issued.

TOM BRADFORD PERPETUAL TROPHY

Awarded to the full member gaining the highest aggregate points in all classes.

HOME GUARD CUP

For most points achieved in the Novice class. The winner will also receive a gift ticket to the next National Honey Show.

PERPETUAL CHALLENGE CUP

Awarded to the exhibitor domiciled in Herefordshire gaining the most points in Classes 2, 3 and 4.

EAVES PERPETUAL CHALLENGE CUP

Awarded to the exhibitor gaining most points in Classes 5 and 6.

HARRY GARDENER MEMORIAL TROPHY

Awarded to the exhibitor gaining most points in Classes 12, 13, 19 and 20.

MAIDSTONE CUP

Awarded to the winner of Class 11.

JOHN HARLEY CUP

Awarded to the winner of Class 18.

DOMESTIC TROPHY

Awarded to the exhibitor gaining most points in Classes 21, 22, and 23.

BRITISH BEEKEEPERS' ASSOCIATION CERTIFICATE OF MERIT

For an exhibit of outstanding merit, where the number of entries is below that required for the BBKA Blue Ribbon.